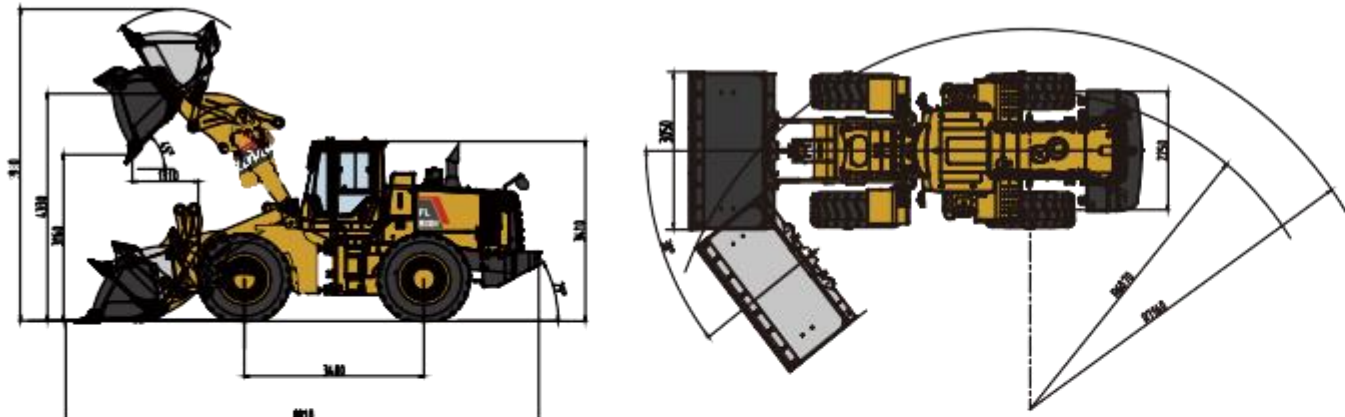


# 966H Wheel Loader Specifications



## 966H Dimensions



Item	Specifications
Rated Load	6000kg
Max. Traction Force	175kN
Max. Gradeability	29°
Max. Dump Clearance	3160mm
Dump Reach	1320mm
Wheel Tread	2300mm
Wheelbase	3400mm
Overall Dimension ( L×W×H )	8810mmx3050mmx3410mm
<b>Engine</b>	
Emission Standard	Stage II
Number of Cylinder-Bore/Stroke	6-126*130
Max. Torque	980N·m
Rated Speed	2200rpm
Displacement	9.726L
<b>Transmission System</b>	
Torque Converter	Single stage single phase three element
Modulus of Converter	2.55
Transmission	Electronical control countershaft
Gear Shift	4 forward, 3 reverse
Max. Speed	38.0km/h
<b>Front and Rear Axles</b>	
Axles Type	Dry axles
Final Decelerate Type	Planetary reducer, spur cylindrical gear

<b>Tyre</b>	
Tyre Size	23.5-25
Ply	20
Front Tyre Pressure	0.35-0.375MPa
Rear Tyre Pressure	0.30-0.35MPa
<b>Steering System</b>	
Type	Fix&Variable hydraulic system
Steering Angle Each Direction	38°±1°
Min. Turning Radius	6070mm
<b>Hydraulic System</b>	
Working Pressure	18MPa
Boom Lifting Time	5.7s
Total Cycle Time	11.0s
<b>Brake System</b>	
Service Brake	Air over hydraulic caliper disc brake
Park Brake	Air-cut brake
<b>Fuel Tank</b>	
Fuel Tank Capacity	364L
<b>Hydraulic Tank</b>	
Hydraulic Tank Capacity	150L
<b>Engine Oil</b>	
Engine Oil Capacity	20L



### POCLANE CONSTRUCTION CONSTRUCTION EQUIPMENT INDIA PVT LTD.

Address : 8/110, 1<sup>ST</sup> Floor, Depot Lane, Pallavaram Chennai-600043, Tamil Nadu, India  
 Contact: +91 73058 43417 / +91 74492 57231 / +91 86672 79007

Facebook: @Poclane / Instagram: @poclane.india / LinkedIn: Poclane Construction Equipment

As manufacturer, Poclane has right to constantly upgrade and improve our products without informing to customers. The pictures in literatures are for reference only, the detailed specifications are subject to real products.

Engine Model	WEICHAI WD10G240E21
Rated Power	175kW
Max. Breakout Force	185kN
Operating Weight	20600kg
Bucket Capacity	4.0m³

# 966H

WHEEL LOADER



## PRODUCTIVITY

- Equipped with 4.0m<sup>3</sup> bucket, high-efficiency powertrain system is perfectly matched with hydraulic multi-stage power system that makes machine work fast and efficient.
- The proven linkage structure is very efficient which has big breakout force, quick movement and high lifting capacity features.
- Low-effort joystick control system delivers high-efficiency operation with ease and fast.

## RELIABILITY

- The H series features many components which leverage product designs that have delivered reliable and durable machines.
- Adopt world class engine which provides excellent service and part availability in market.
- Optimized layout of pipelines and dual-seal technology can avoid oil leakage and make hydraulic system more reliable.

## ROBUSTNESS

- Reinforced center-articulated frame which has passed million times fatigue experimental test, 1,000 hours intensive experimental test and 5,000 hours jobsite test, it has been proved to be robust and durable.
- Bucket use JF440 steel which are joint-invented with renowned steel factory, it is more robust and wearable.
- The key components of axles are reinforced which could extend service time of whole axles and makes it more suitable for heavy-duty applications.

## COMFORT

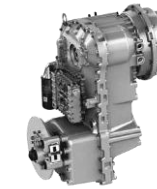
- Poclane ETX (European Technology Excellent) cab adopts skeleton structure which has great vision, solid frame and lower noise features · these could provide a comfortable working environment for operator.
- High-back mechanical suspension seat with headrest could make operator feel more comfortable.
- The cab has micro pressurizing air system that makes the environment cleaner and comfortable.

## 01 Engine



- Standard equipped with WEICHAI WD10G240E21 engine which is specialized for the heavy-dust working environment, it adopts three-stage air filter which can avoid early wear out of engine to extend service life. It also adopts multi-stage fuel filter which is suitable for various fuel to ensure the cleanliness of engine system.

## 02 Transmission



- The transmission adopts Germany ZF 4WG200 gearbox, it is durable and reliable that can provide long service time.
- Using electronic control shift technology, the operating lever has KD function to realize efficient switching between the second gear and first gear.

## 03 Axles



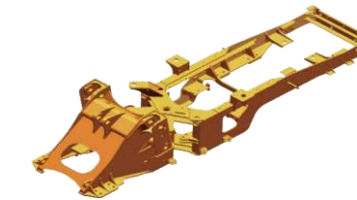
- Axle housing is optimized design through increasing the cross-section, the brace bearing of wheel hub is also reinforced, that make front axles capacity reaches 40T.
- Main reducer and wheel hub are reinforced, the service lives rise 30%.

## 04 Cab



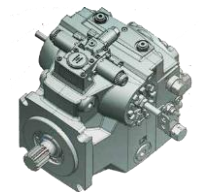
- Integrated closed skeleton structure cab which has great vision, equipped with air conditioning and high-back mechanical suspension seat · that make operator more comfortable.

## 05 Frame and Articulation



- New reinforced front and rear frames with patented composite articulated structure went through million times fatigue experimental test, 1,000 hours intensive experimental test and 5,000 hours jobsite test, reach super strong payload capacity.

## 06 Hydraulic System



- The hydraulic system is fix & variable system · the steering pump is piston pump with high bearing pressure and high reliability features.
- Hydraulic oil filter's filtration ratio is 200 (means 99.5% impurities could be filtered out), that makes hydraulic system cleaner and more reliable.

## Attachments



Larger Bucket    Log Grapple    Rock Bucket    Pallet Fork    Coal Bucket    Side-dump Bucket