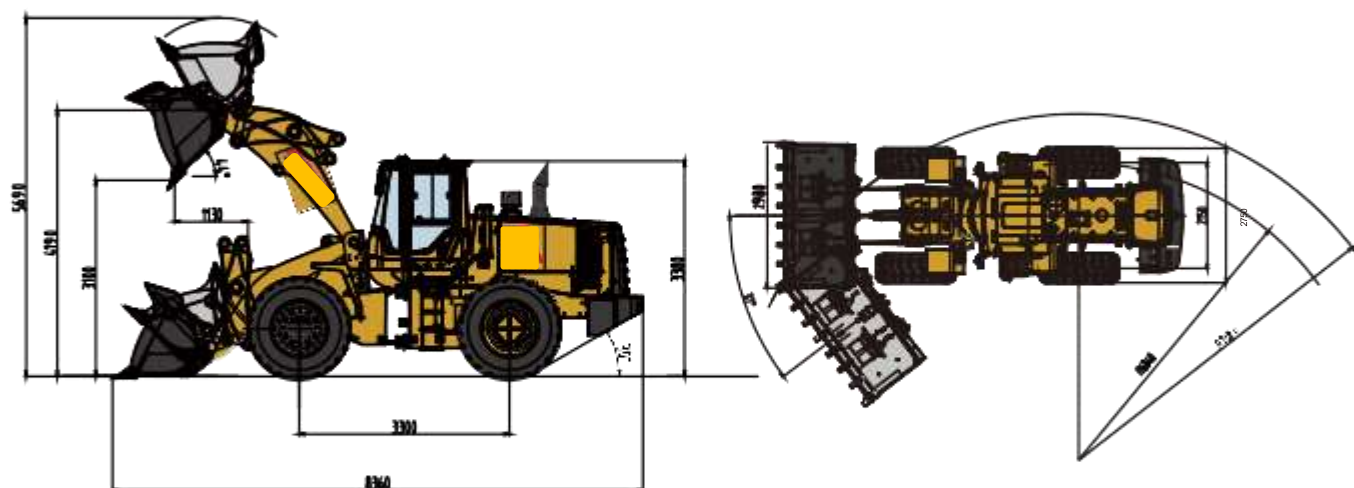


# 956H WHEEL LOADER SPECIFICATIONS



## 956H Dimensions



| Item                           | Specifications                           |
|--------------------------------|--|
| Rated Load                     | 5500kg                                   |
| Max. Traction Force            | 160kN                                    |
| Max. Gradeability              | 30°                                      |
| Max. Dump Clearance            | 3100mm                                   |
| Dump Reach                     | 1130mm                                   |
| Wheel Tread                    | 2150mm                                   |
| Wheelbase                      | 3300mm                                   |
| Overall Dimension ( LxWxH )    | 8360mmx2980mmx3380mm                     |
| Width Over Tyres               | 2750mm                                   |
| <b>Engine</b>                  |  |
| Emission Standard              | TierII                                   |
| Number of Cylinder-Bore/Stroke | 6-126*130                                |
| Max. Torque                    | 980N·m                                   |
| Rated Speed                    | 2000rpm                                  |
| Displacement                   | 9.726L                                   |
| <b>Transmission System</b>     |  |
| Torque Converter               | Single stage two phase four element      |
| Modulus of Converter           | 4.0                                      |
| Transmission                   | Planetary powershift                     |
| Gear Shift                     | 2 forward, 1 reverse                     |
| Max. Speed                     | 42km/h                                   |
| <b>Front and Rear Axles</b>    |  |
| Axles Type                     | Dry axles                                |
| Final Decelerate Type          | Planetary reducer, spur cylindrical gear |

| <b>Tyre</b>                   |   |
|-------------------------------|---|
| Tyre Size                     | 23.5-25   |
| Ply                           | 16  |
| Front Tyre Pressure           | 0.30-0.32MPa  |
| Rear Tyre Pressure            | 0.28-0.30MPa  |
| <b>Steering System</b>        |   |
| Type                          | Three pump flow confluence, hydraulic flow amplification system |
| Steering Angle Each Direction | 37°   |
| Min. Turning Radius           | 7010mm  |

| <b>Hydraulic System</b> |       |
|-------------------------|-------|
| Working Pressure        | 18MPa |
| Boom Lifting Time       | 5.7s  |
| Total Cycle Time        | 10.6s |

| <b>Brake System</b> |                                       |
|---------------------|---------------------------------------|
| Service Brake       | Air over hydraulic caliper disc brake |
| Park Brake          | Air-cut brake                         |

| <b>Service Refill Capacity</b> |      |
|--------------------------------|------|
| Fuel Tank                      | 320L |
| Hydraulic Tank                 | 210L |
| Engine Oil                     | 20L  |



## POCLANE CONSTRUCTION EQUIPMENT INDIA PVT LTD.

Address : No. 8/110, G S T Road, 1<sup>st</sup> Floor, Pallavaram, Chennai 600043, India, China.  
Website: [www.poclane.com](http://www.poclane.com)

E-mail: [sales@poclane.com](mailto:sales@poclane.com)

TEL: +91 73058 43417, 74492 57231, 86672 79007, 63740 88080

As manufacturer, POCLANE has right to constantly upgrade and improve our products without informing to customers. The pictures in literatures are for reference only, the detailed specifications are subject to real products.

|                     |                            |
|---------------------|----------------------------|
| Engine Model        | <b>WEICHAI WD10G220E23</b> |
| Rated Power         | <b>162kW</b>               |
| Operating Weight    | <b>17000kg</b>             |
| Bucket Capacity     | <b>3 m<sup>3</sup></b>     |
| Max. Breakout Force | <b>165kN</b>               |

# 956H

WHEEL LOADER



## PRODUCTIVITY

- The first 5 ton wheel loader with 3m<sup>3</sup> bucket which is easier to load, achieves greater fill factors and could retain more materials.
- High-efficiency powertrain system is perfectly matched with hydraulic multi-stage power system that makes machine work fast and efficient.
- Patented Three Pump Flow confluence technology is adopted. During engine idling, the auxiliary pump works together with the steering pump to provide sufficient flow to make steering light and convenient. When steering is not required, the auxiliary pump works together with working pump to make loading more powerful and efficient.
- Low-effort joystick control system delivers high-efficiency operation with ease and fast.

## RELIABILITY

- The H series features many components which leverage product designs that have delivered reliable and durable machines.
- Adopt world class engine which provides excellent service and part availability in market.
- Optimized layout of pipelines and dual-seal technology can avoid oil leakage and make hydraulic system more reliable.

## ROBUSTNESS

- Reinforced center-articulated frame which has passed million times fatigue experimental test, 1,000 hours intensive experimental test and 5,000 hours jobsite test, it has been proved to be robust and durable.
- Patented gearbox adopts reinforced overrunning clutch which could provide longer service time to the whole transmission system.
- The key components of axles are reinforced which could extend service time of whole axles and makes it more suitable for heavy-duty applications.

## COMFORT

- ETX (European Technology Excellent) cab adopts skeleton structure which has great vision, solid frame and lower noise features, these could provide a comfortable working environment for operator.
- High-back mechanical suspension seat with headrest could make operators feel more comfortable.
- Ladders with self-cleaning steps are inclined which is easy to climb up and down, wild platform allows the ease of movement from front or rear of machines.

## 01 Engine



- Standard equipped with WEICHAI WD10G220E23 engine which is specialize for the heavy-dust working environment, it adopts three-stage air filter which can avoid early wearout of engine to extend service life. It also adopts multi-stage fuel filter which is suitable for various fuel to ensure the cleanliness of engine system.
- SHANGCHAI SC11CB22G2B1 engine is optional.

## 02 Transmission



- Transmission adopts patented reinforced overrunning clutch, service life rises 30% with high reliability.
- Key bearings and seals adopt imported premium parts which have higher reliability.

## 03 Axles



- Axle housing is optimized design through increasing the cross-section, the brace bearing of wheel hub is also reinforced, that make front axles capacity reaches 40T.
- Main reducer and wheel hub are reinforced, the service lives rise 30%.

## 04 Cab



- Integrated closed skeleton structure cab which has great vision, equipped with air conditioning and high-back mechanical suspension seat that make operator more comfortable.

## 05 Frame and Articulation



- New reinforced front and rear frames with patented composite articulated structure went through million times fatigue experimental test, 1,000 hours intensive experimental test and 5,000 working hours jobsite test, reach super strong payload capacity.

## 06 Hydraulic System



- Patented Three Pump confluence technology, it includes three pumps with small displacement and small size, but their flow pressures are higher, and more reliable.
- Hydraulic oil filter's filtration ratio is 200 (means 99.5% impurities could be filtered out) that makes hydraulic system cleaner and more reliable.

## Attachments



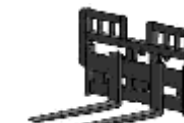
Larger Bucket



Log Grapple



Rock Bucket



Pallet Fork



Coal Bucket



Side-dump Bucket